

MEDC Series

Truly a unique product offering with integral visual and audible signaling devices pre-wired for simultaneous output activation.

- Suitable for Class I, Division 2 applications
- Strobe light and audible tone generator in one package
- Mounts with ease and facilitates quick field wiring
- UL, cUL, Ex and ATEX for worldwide acceptance

This range of lightweight all GRP, explosionproof horns intended for use in potentially explosive atmospheres has been designed with high ingress protection to cope with the harsh environmental conditions found offshore and onshore in the oil, gas and petrochemical industries.

The flamepaths, flare, and body are manufactured completely from a UV stable glass reinforced polyester. Stainless steel screws and sinter are incorporated thus ensuring a corrosion-free product. A tapered flamepath is used to overcome the problems of assembly of parallel spigot flamepaths.

Features and Benefits:

- All GRP corrosion-free
- Up to 108dBA output at 10 feet
- Integral volume control
- 27 tones, user selectable
- Horn/Strobe Combination Unit available

Certifications and Compliances:

- UL Listed for USA and Canada
 - Hazardous locations:
 - Class I, Div. 2, Groups A, B, C, D
 - Class I, Zones 1 & 2, AExd IIC T4
 - Ordinary locations: Audible Signal device
- ATEX approved
- NEMA 4X & 6, IP66 & 67
- Certified temperature
 - 67°F to +158°F
 - 55°C to +70°C



Horn/Strobe Combination Unit

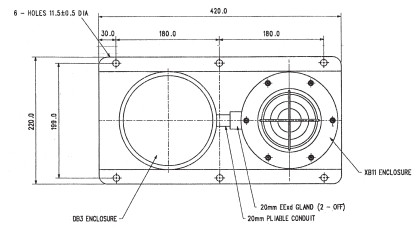
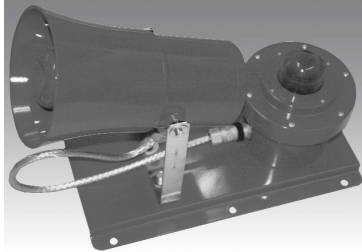
Visual and Audible Combination Units

Hazardous Locations
Weatherproof

6S

MEDC Series

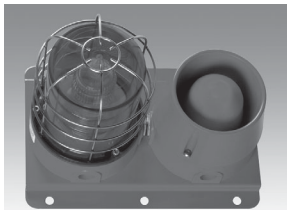
Visual & Audible Combination Units—Hazardous Locations, Weatherproof



Certification	Voltage	Lens/Body Color	Ordering Code	Cat. #	Standard Product Configuration
ATEX Ex II 2GD	24V DC	Red/Red	803130	DB3/XB11B24V RED/RED	DB3/XB11, Exd IIB T5, choice of 27 tones, 115dB(A) at 1m output, 29 Cd, no labels, 1 x M20 entry
UL, cUL Listed, Class I, Div. 2, Groups C, D	24V DC	Red/Natural Black	869200	DB3/XB11UL24V RED/NB	DB3/XB11, GRP material, NEMA 4X & 6, choice of 27 tones, 106dB(A) at 10 feet output, 29 Cd, no labels, 1 x 1/2" NPT entries
UL, cUL Listed, Class I, Div. 2, Groups C, D	24V DC	Red/Red	869205	DB3/XB11UL24V RED/RED	
UL, cUL Listed, Class I, Div. 2, Groups C, D	110V AC	Red/Red	869210	DB3/XB11UL110V RED/RED	



Certification	Voltage	Lens/Body Color	Ordering Code	Cat. #	Standard Product Configuration
UL, cUL Listed, Class I, Div. 1, Groups C, D	24V DC	Red/Red	62500182	DB1P/SM87HXBUL 24V RED/RED	24V DC, alloy sounder, interconnected to, painted red stainless steel baseplate, alloy 5 joule beacon
UL, cUL Listed, Class I, Div. 2, Groups C, D	24V DC	Red/Red	62500183	DB3/SM87HXBUL 24V RED/RED	GRP sounder interconnected to, painted red stainless steel baseplate, alloy 5 joule beacon



Certification	Voltage	Lens/Body Color	Ordering Code	Cat. #	Standard Product Configuration
Ex II 2GD	24V DC	Red/Red	62500009	DB12/XB13 24V RED/RED	IP66 & 67 weatherproof only, 24V DC, GRP sounder interconnected to, on a painted red stainless steel baseplate, a IP66 & 67 weatherproof only, GRP 10 joule beacon

6S